

## REFERENCES

- Al-Lafta, H. S., Al-Tawash, B. S., & Al-Baldawi, B. A. (2013). Applying the ‘abcd’ Monthly Water Balance Model for Some Regions in the United States. *Advances in Physics Theories and Applications Volume, 25*, 36–47.
- Allen, R. G., Pereira, L. S., Raes, D., & Smith, M. (1998). FAO Irrigation and drainage paper No. 56. *Rome: Food and Agriculture Organization of the United Nations, 56*, 97–156.
- Alley, W. M. (1984). On the Treatment of Evapotranspiration, Soil Moisture Accounting, and Aquifer Recharge in Monthly Water Balance Models. *WATER RESOURCES RESEARCH, 20*(8), 1137–1149.
- Atkinson, S. E., Woods, R. A., & Sivapalan, M. (2002). Climate and landscape controls on water balance model complexity over changing timescales: CLIMATE AND LANDSCAPE CONTROLS ON MODEL COMPLEXITY. *Water Resources Research, 38*(12), 50-1-50–17. <https://doi.org/10.1029/2002WR001487>
- Bauer, L.R., and Hamby, D.M. (1991), Relative Sensitivities of Existing and Novel Model Parameters in Atmospheric Tritium Dose Estimates, *Rad. Prot. Dosimetry. 37*(4), 253-260.
- Brutsaert, W. (2013). Use of pan evaporation to estimate terrestrial evaporation trends: The case of the Tibetan Plateau: TECHNICAL NOTE. *Water Resources Research, 49*(5), 3054–3058. <https://doi.org/10.1002/wrcr.20247>
- Caldera, H.P.G.M., Piyathisse, V.R.P.C., & Nandalal, K.D.W. (2016). A comparison of methods of estimating missing daily rainfall data, “Engineer”, *Journal of the Institution of Engineers, Sri Lanka*, Vol XLIX, No 04, pp 1-8
- Chow, V. T., Maidment, D. R., & Mays, L. W. (1988). *Applied hydrology*. McGraw-Hill Book Company.

- Crick, M.J., Hill, M.D. and Charles, D. (1987), The Role of Sensitivity Analysis in Assessing Uncertainty. *Proceedings of an NEA Workshop on Uncertainty Analysis for Performance Assessments of Radioactive Waste Disposal Systems* (pp. 1-258). Paris, OECD,
- Devia, G. K., Ganasri, B. P., & Dwarakish, G. S. (2015). A Review on Hydrological Models. *Aquatic Procedia*, 4, 1001–1007. <https://doi.org/10.1016/j.aqpro.2015.02.126>
- Gupta, H. V., Kling, H., Yilmaz, K. K., & Martinez, G. F. (2009). Decomposition of the mean squared error and NSE performance criteria: Implications for improving hydrological modelling. *Journal of Hydrology*, 377(1–2), 80–91. <https://doi.org/10.1016/j.jhydrol.2009.08.003>
- Hamby, D.M. (1994). A review of techniques for parameter sensitivity analysis of environmental models. *Environmental Monitoring and Assessment*, 32(2), 135-154.
- Hoad, K., Robinson, S., & Davies, R. (2008). AUTOMATING WARM-UP LENGTH ESTIMATION. *Proceedings of the 2008 Winter Simulation Conference*.
- Hoffman, E.O. & Gardner, R.H. (1983), *Evaluation of Uncertainties in Environmental Radiological Assessment Models (Report No. NUREG/CR-3332)*. Washington, DC: U.S. Nuclear Regulatory Commission.
- Iman, R.L., and Helton, J.C. (1988), An Investigation of Uncertainty and Sensitivity Analysis Techniques for Computer Models, *Risk Analysis*, 8(1), 71-90.
- Intergovernmental Panel on Climate Change (2007). Climate change 2007: Impacts, adaptation and vulnerability: Contribution of Working group II to the forth assessment report of the Intergovernmental Pannel on climate change. UK cambridge University Press.
- Kahya, E., & Kalaycı, S. (2004). Trend analysis of streamflow in Turkey. *Journal of Hydrology*, 289(1–4), 128–144. <https://doi.org/10.1016/j.jhydrol.2003.11.006>

- Kanchanamala, D., Herath, H., & Nandalal, K. D. W. (2016). Impact of Catchment Scale on Rainfall Runoff Modeling: Kalu Ganga River Catchment upto Ratnapura. *Engineer: Journal of the Institution of Engineers, Sri Lanka*, 49(2). Retrieved from <http://engineer.sljol.info/articles/10.4038/engineer.v49i2.7003/galley/5491/download/>
- Khandu, D. (2015). *A Monthly Water Balance Model for Evaluation of Climate Change Impacts On Gin Ganga and Kelani Ganga Basins, Sri Lanka* (Master's thesis). University of Moratuwa, Katubadda, Sri Lanka.
- Krause, P., Boyle, D. P., & Bäse, F. (2005). Comparison of different efficiency criteria for hydrological model assessment. *Advances in Geosciences*, 5, 89–97.
- Legate, D. R., & McCabe Jr., G. J. (1999). Evaluating the use of ‘goodness-of-fit’ measures in hydrologic and hydroclimatic model validation. *Water Resources Research*, 35(1), 233–241.
- Mahalingam, B., Deldar, A. N., & Vinay, M. (2015). ANALYSIS OF SELECTED SPATIAL INTERPOLATION TECHNIQUES FOR RAINFALL DATA. *International Journal of Current Research and Review*, 7(7), 66.
- Martinez, G. F., & Gupta, H. V. (2010). Toward improved identification of hydrological models: A diagnostic evaluation of the ‘abcd’ monthly water balance model for the conterminous United States: DIAGNOSTIC EVALUATION OF ‘abcd’ MONTHLY. *Water Resources Research*, 46(8), n/a-n/a. <https://doi.org/10.1029/2009WR008294>
- Middelkoop, H., Daamen, K., Gellens, D., Grabs, W., Kwadijk, J. C., Lang, H., ... Wilke, K. (2001). Impact of climate change on hydrological regimes and water resources management in the Rhine basin. *Climatic Change*, 49(1), 105–128.
- Nash, J. E., & Sutcliffe, I. (1970). RIVER FLOW FORECASTING THROUGH CONCEPTUAL MODELS PART I - A DISCUSSION OF PRINCIPLES. *Journal of Hydrology*, 10, 282–290.

- Nikam, B. R., Kumar, P., Garg, V., Thakur, P. K., & Aggarwal, S. P. (2014). Comparative Evaluation Of Different Potential Evapotranspiration Estimation Approaches. *International Journal of Research in Engineering and Technology*, 3(06), 544–552.
- Perera, K. R. J., & Wijesekera, N. T. S. (2011). Identification of the spatial variability of runoff coefficients of three wet zone watersheds of Sri Lanka. *Engineer: Journal of the Institution of Engineers, Sri Lanka*, 44(3). Retrieved from <http://engineer.sljol.info/articles/abstract/10.4038/engineer.v44i3.6960/>
- Priyani, M. (2016). Development of a rainfall runoff model for Kalu Ganga basin of Sri Lanka using HEC HMS (Unpublished master's thesis). University of Moratuwa, Katubadda, Sri Lanka.
- Robinson, S. (2004). *Simulation: the practice of model development and use*. Chichester, West Sussex, England ; Hoboken, NJ: John Wiley & Sons, Ltd.
- Sharifi, M. B. (2015). *Calibration and verification of a-two parameter monthly water balance model and its application potential for evaluation of water resources - a case study of Kalu and Mahaweli rivers of Sri Lanka* (Master's thesis). University of Moratuwa, Katubadda, Sri Lanka.
- Sheth-Voss, P. A., Willemain, T. R., & Haddock, J. (2005). Estimating the steady-state mean from short transient simulations. *European Journal of Operational Research*, 162(2), 403–417. <https://doi.org/10.1016/j.ejor.2002.08.001>
- Subramanya, K. (1994). *Engineering Hydrology*. Tata McGraw-Hill Education.
- Thomas, H. A. (1981). Improved Methods for National Water Assessment Water Resources. Retrieved from <https://pubs.usgs.gov/unnumbered/70046351/report.pdf>
- Thomas, H. A., Marin, C. M., & Michael J., B. (1983). *Methodology for Water Resources Assessment*.

- Vandewiele, G. L., Xu, C.-Y., & others. (1992). Methodology and comparative study of monthly water balance models in Belgium, China and Burma. *Journal of Hydrology*, 134(1–4), 315–347.
- Wang, Q. J., Pagano, T. C., Zhou, S. L., Hapuarachchi, H. A. P., Zhang, L., & Robertson, D. E. (2011). Monthly versus daily water balance models in simulating monthly runoff. *Journal of Hydrology*, 404(3–4), 166–175. <https://doi.org/10.1016/j.jhydrol.2011.04.027>
- Wickramaarachchi, T. N., Ishidaira, H., & Wijayaratna, T. M. N. (2012). An Application of Distributed Hydrological Model, YHyM/BTOPMC to Gin Ganga Watershed, Sri Lanka. *Engineer: Journal of the Institution of Engineers, Sri Lanka*, 45(2). Retrieved from <http://engineer.sljol.info/articles/10.4038/engineer.v45i2.6939/>
- Wijesekera, N. T. S. (2000). Parameter Estimation in Watershed Model: A Case Study Using Gin Ganga Watershed. *Annual Sessions of the Institution of Engineers Sri Lanka, 1–Part B*, 26–32.
- Wijesekera, N.T.S., & Ghanapala, P.P., (2003). Modeling of Two Low Lying Urban Watersheds in the Greater Colombo Area for Drainage and Environment Improvement, “*Engineer*”, *Journal of the Institution of Engineers, Sri Lanka*, Vol XXXVI, No 01, pp 39-45
- Wijesekera, N. T. S., & Rajapakse, R. (2014). Mathematical modelling of watershed wetland crossings for flood mitigation and groundwater enhancement—case of the Attanagalu Oya river basin. *Engineer: Journal of the Institution of Engineers, Sri Lanka*, 46(3). Retrieved from <http://engineer.sljol.info/article/abstract/10.4038/engineer.v46i3.6785/>
- Wijesiri, I. D., Chaminda, G.G.T., & Silva G.H.A.C. (2015). Catchment Protection of Gin Ganga (River) as part of Water Safety Plan (WSP) in Greater Galle Water Supply Scheme (GGWSS). Proceedings of Research, Relevance and Rigour:

Coming of age: 6th International Conference on Structural Engineering and Construction Management (pp. 169-176). Kandy, Sri Lanka.

World Meteorological Organization (2009). *Guide to Hydrological Practices: Volume. II: Management of Water Resources and Application of Hydrological Practices*. (6th ed., Vol. 11). Geneva, Switzerland: World Meteorological Organization.

Xiong, L., & Guo, S. (1999). A two-parameter monthly water balance model and its application. *Journal of Hydrology*, 216(1), 111–123.

Xu, C.-Y., & Singh, V. P. (1998). A review on monthly water balance models for water resources investigations. *Water Resources Management*, 12(1), 20–50.

Xu, C.-Y., & Singh, V. P. (2004). Review on regional water resources assessment models under stationary and changing climate. *Water Resources Management*, 18(6), 591–612.

## **APPENDIX-A**

### **DATA CHECKING FOR KALU GANGA WATERSHED**

A-1- Double mass curve analysis for Kalu Ganga

A-2- Visual checking of rainfall and stream flow for Kalu Ganga

A-3- Monthly comparison of Thiessen Averaged Rainfall, Stream flow and Evaporation for Kalu Ganga (1980-2010)

A-4- Monthly, Annual and Seasonal Runoff Coefficients for Ellagawa Watershed (1980-2000)

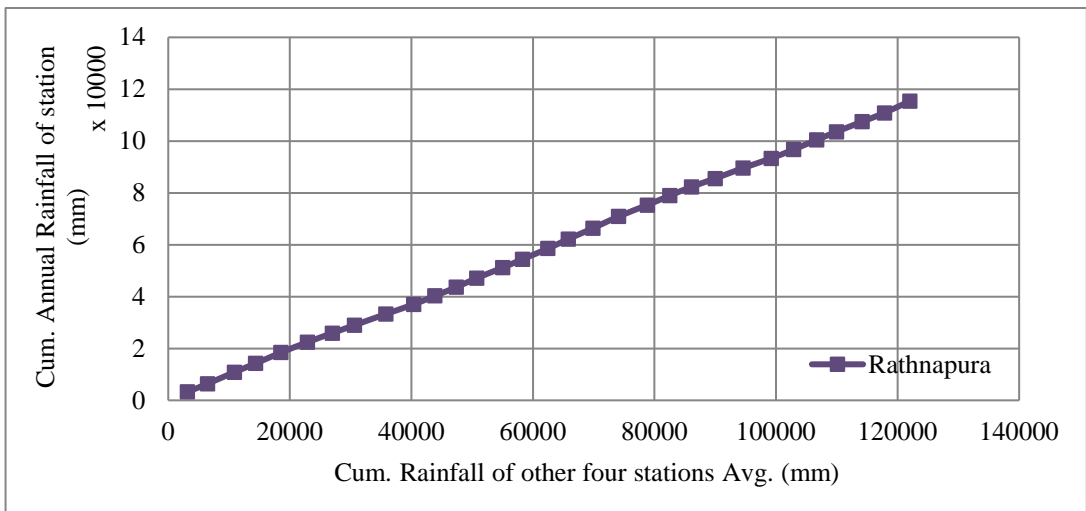
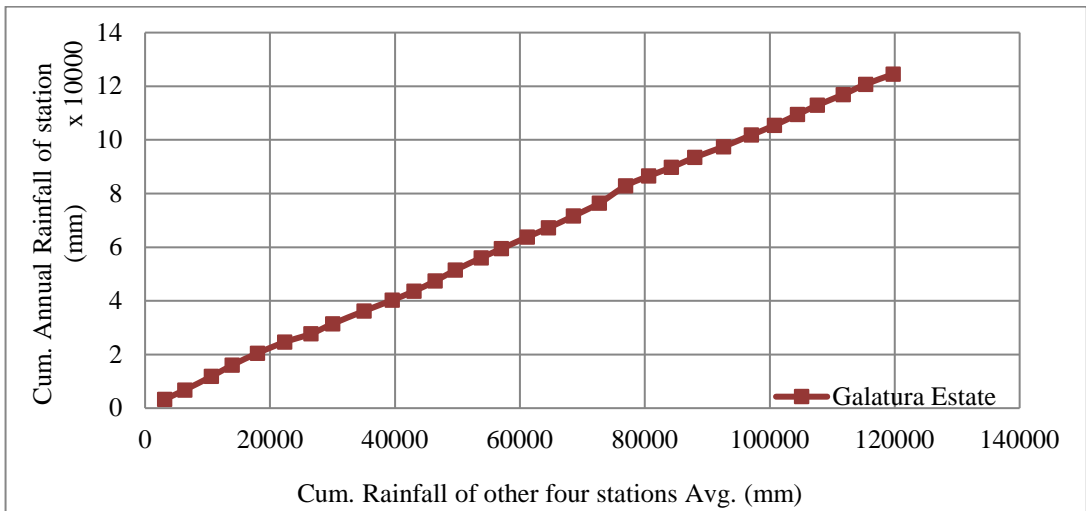
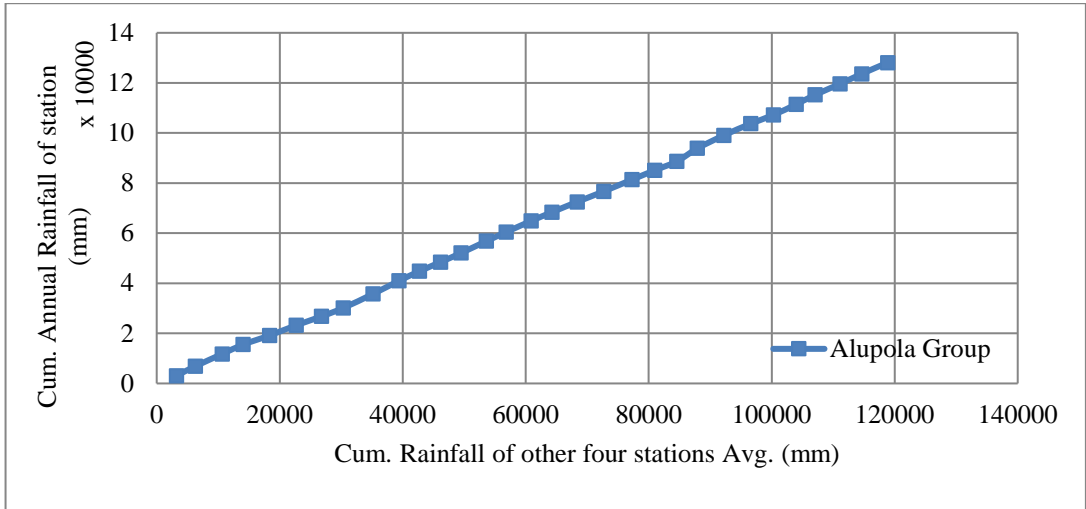


Figure A-1.1: Double mass curve analysis for Kalu Ganga



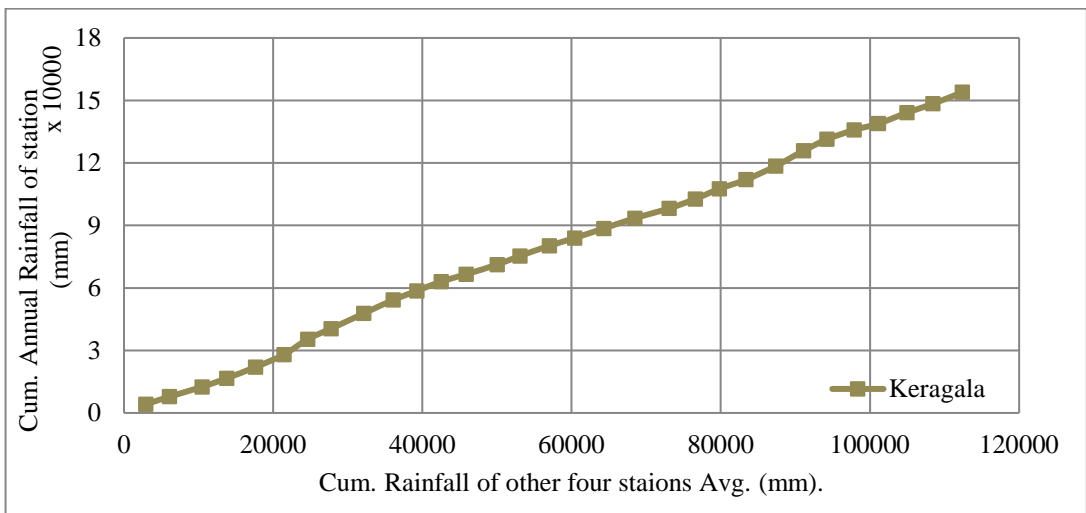
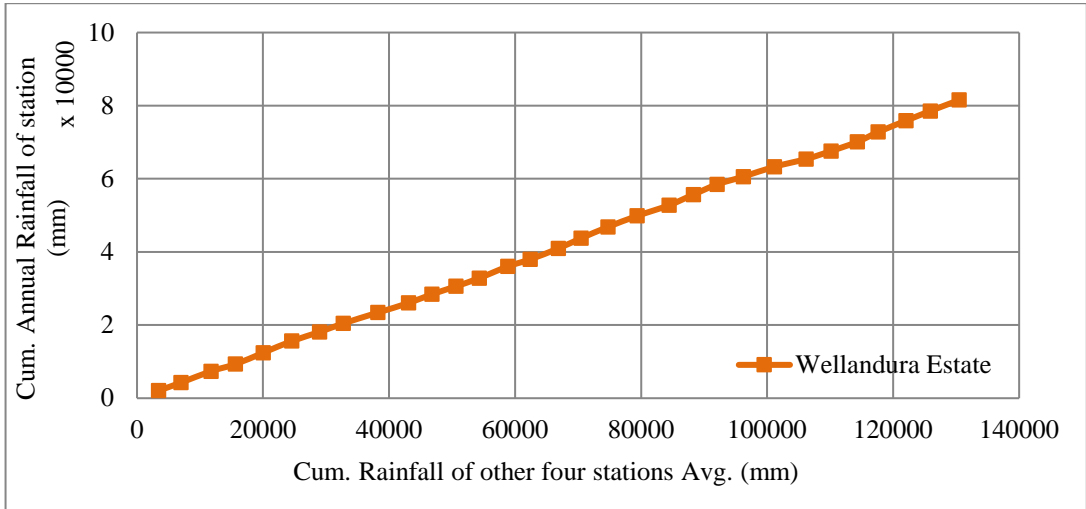


Figure A-1.2: Double mass curve analysis for Kalu Ganga

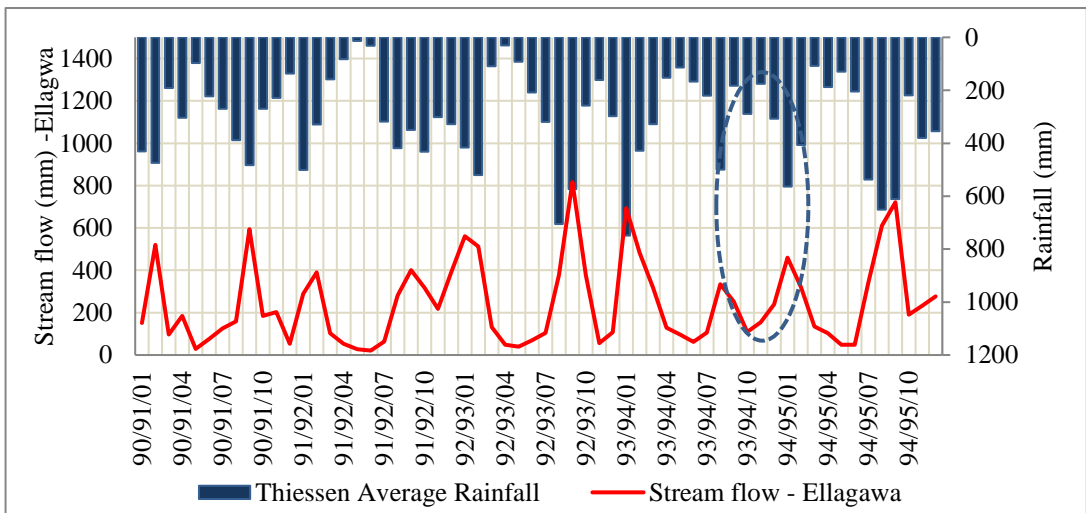
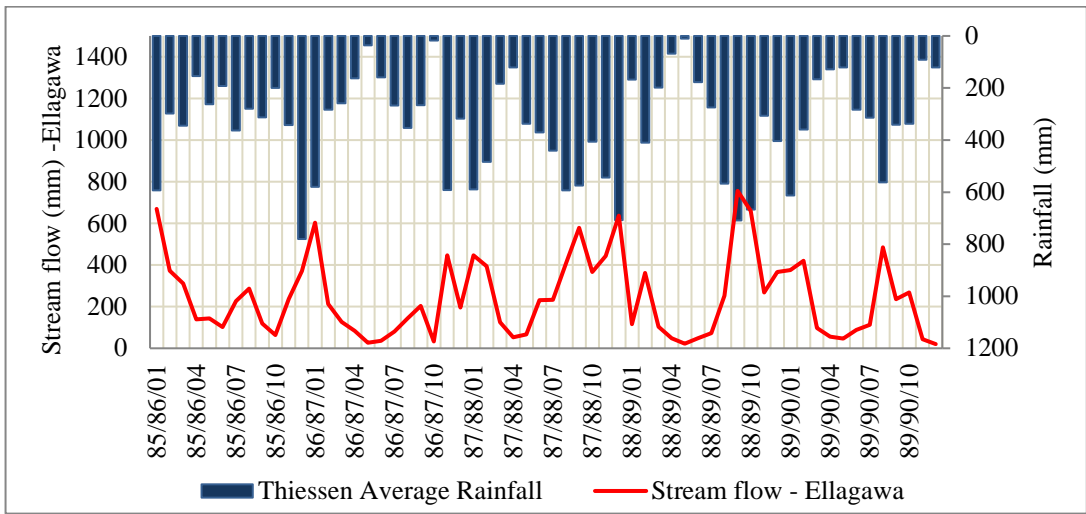
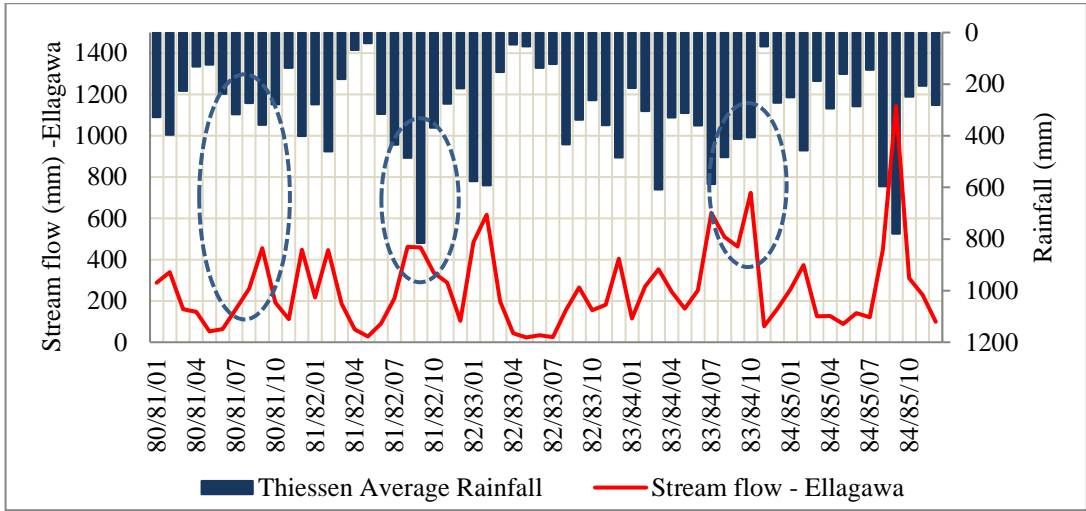


Figure A-2.1: Monthly Stream flow at Ellagawa with respect to monthly Thiessen averaged rainfall- 1980-1995

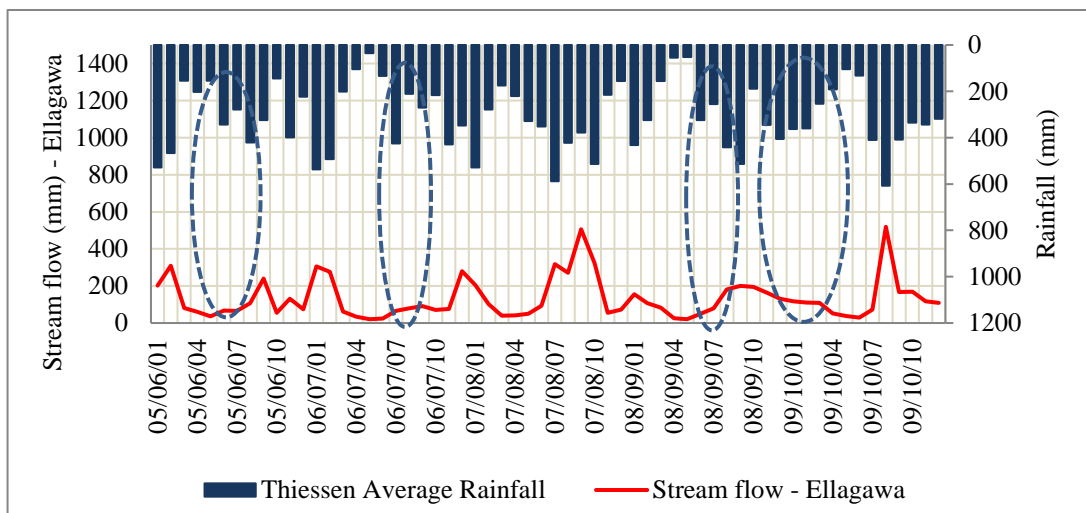
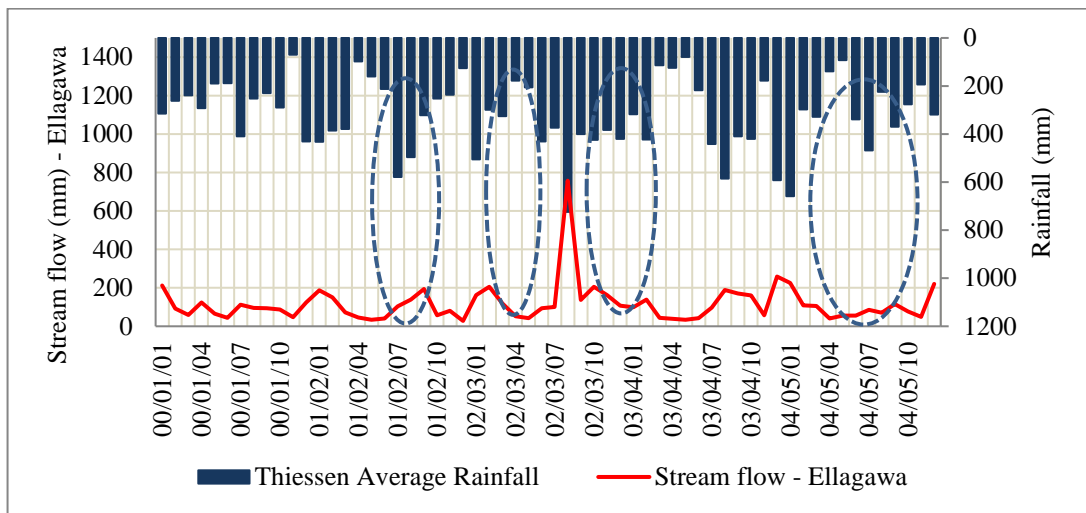
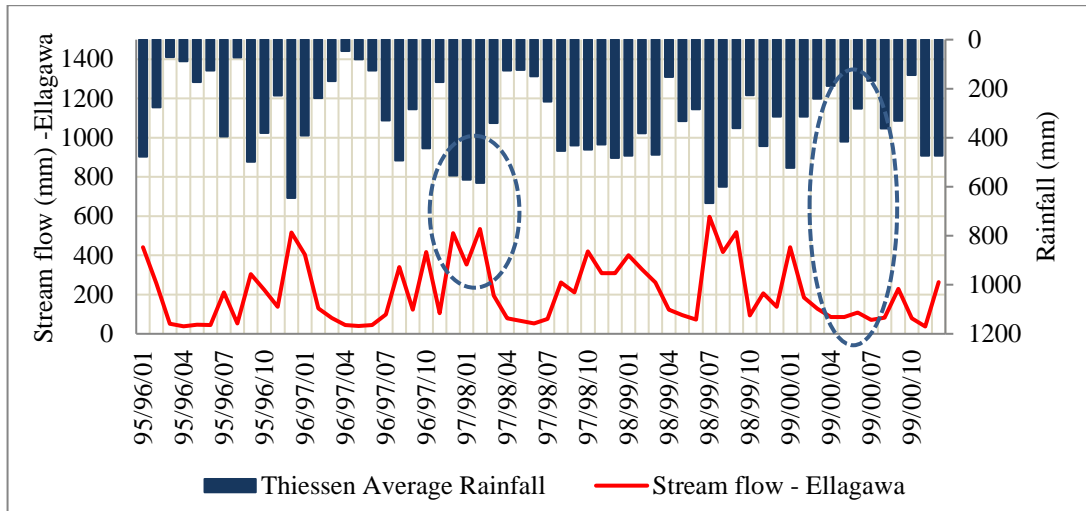


Figure A-2.2: Monthly Stream flow at Ellagawa with respect to monthly Thiessen averaged rainfall- 1996-2010

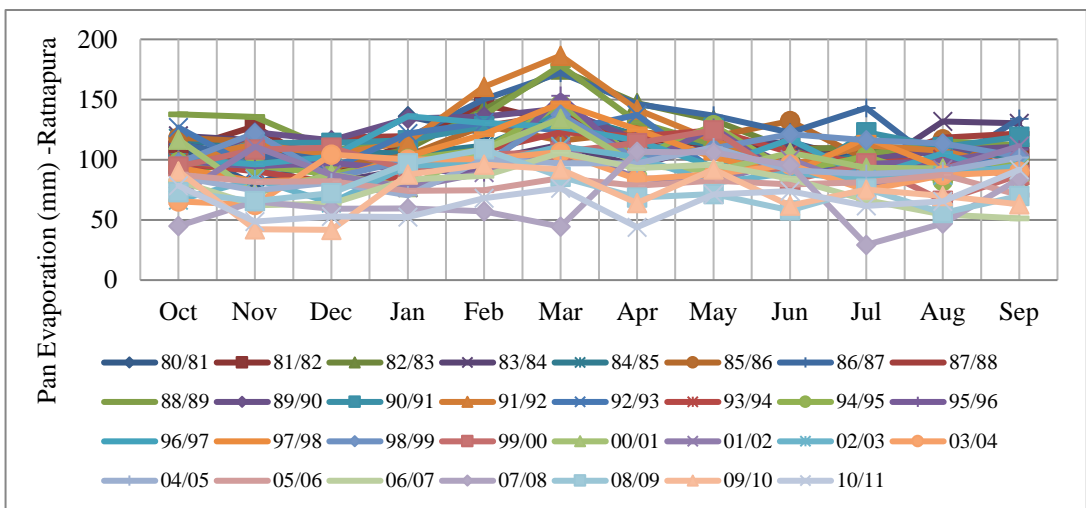
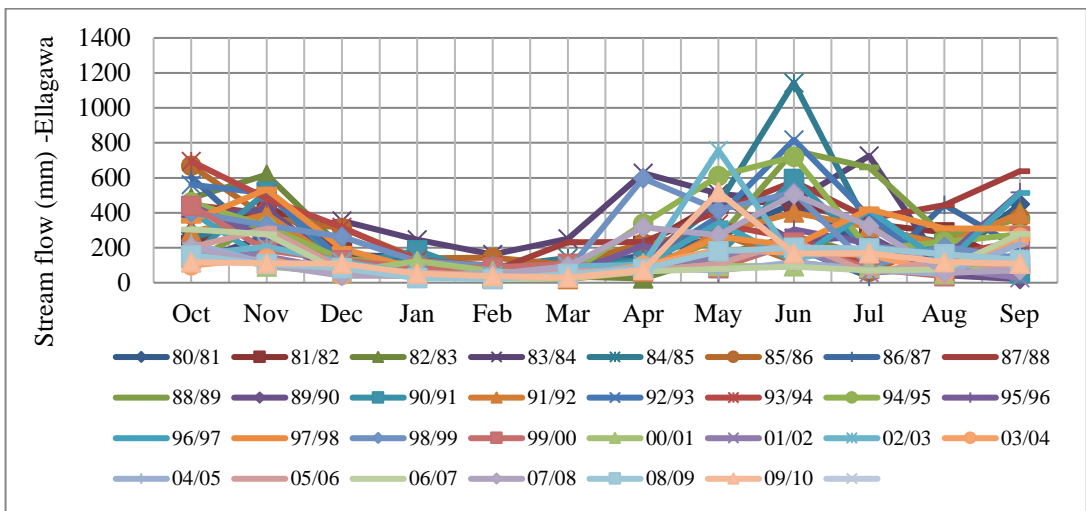
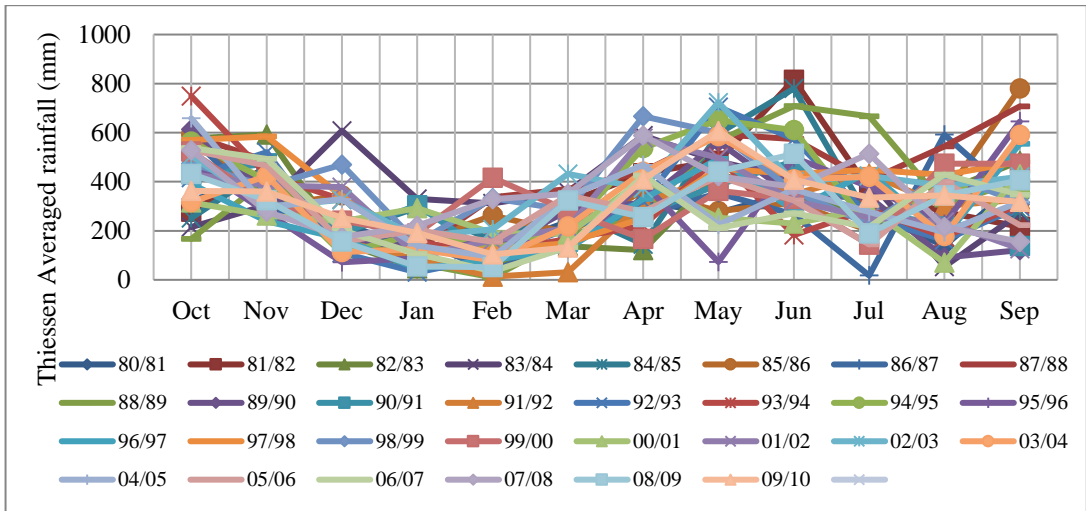


Figure A-3: Monthly comparison of Rainfall, Stream flow and Evaporation for Kalu Ganga- 1980-2010

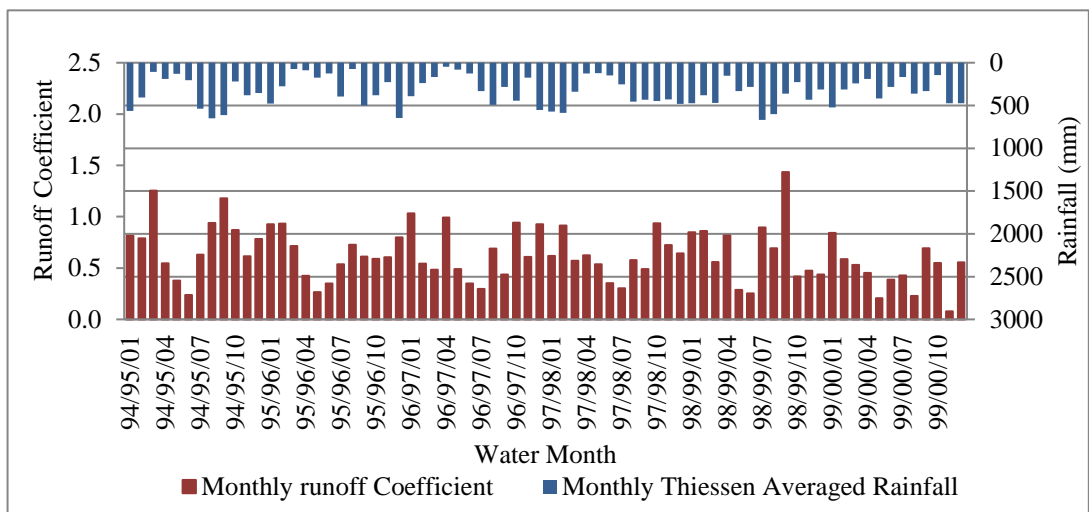
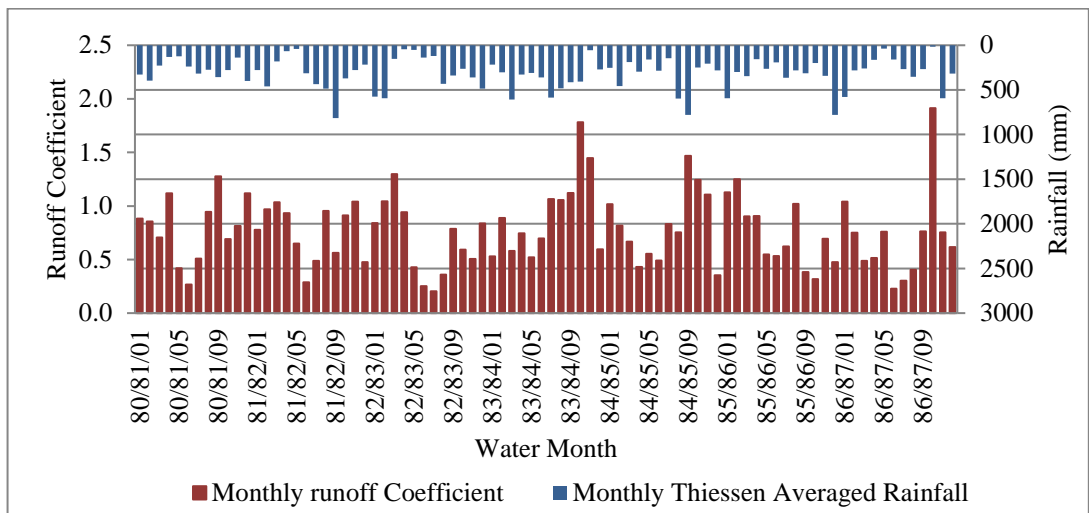
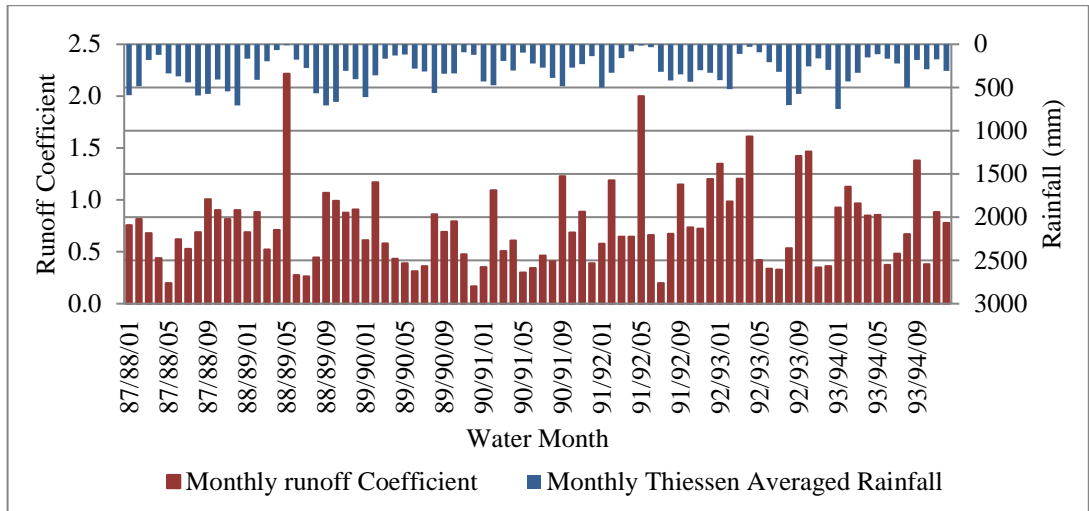


Figure A-4.1: Monthly Runoff Coefficients variation with rainfall in Ellagawa Watershed

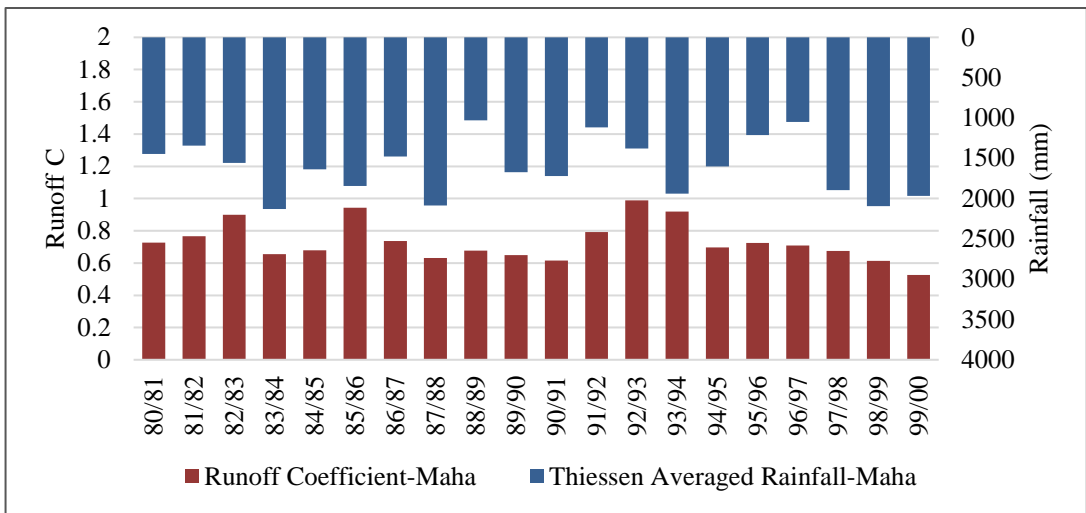
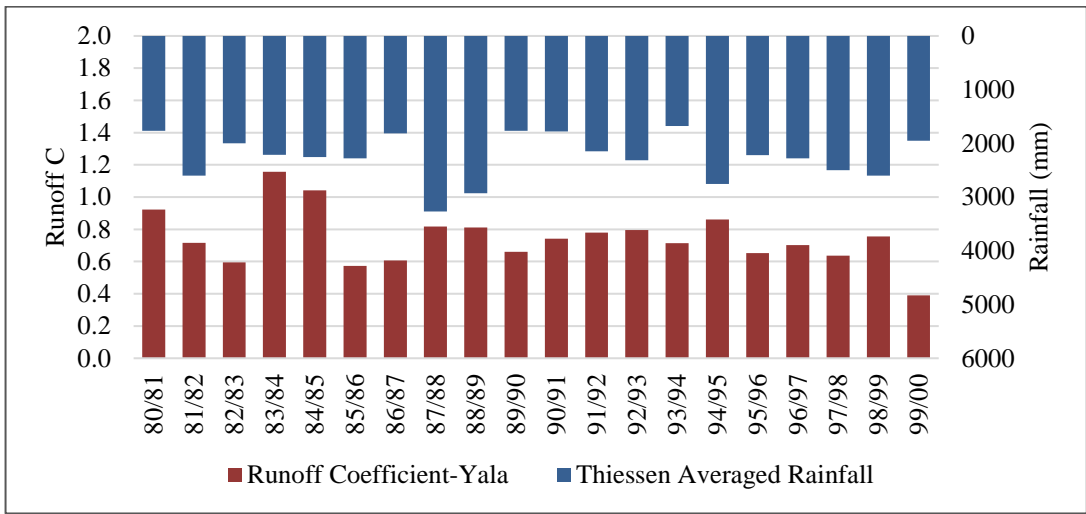
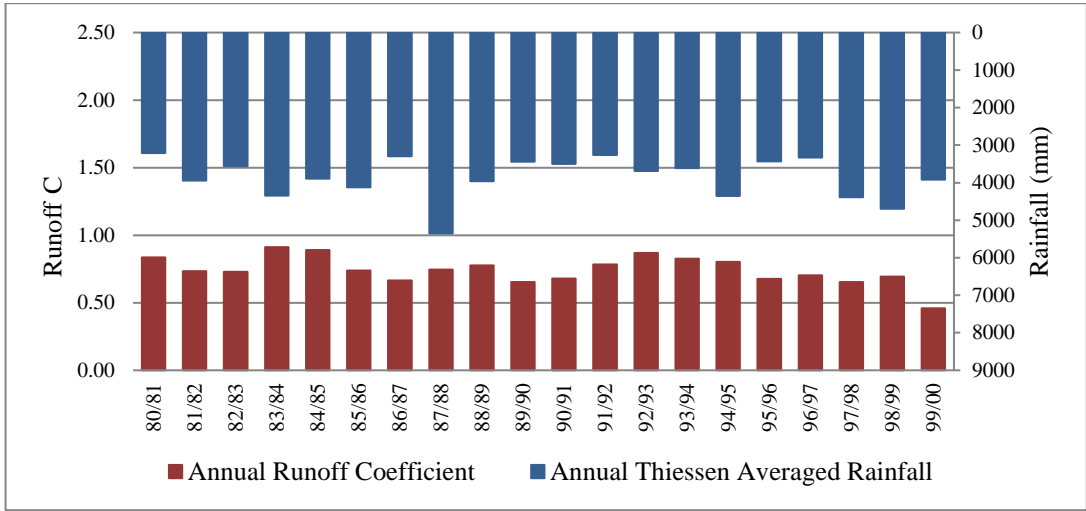


Figure A-4.2: Annual and Seasonal Runoff Coefficient variation with rainfall at Ellagawa watershed

## **APPENDIX-B**

### **DATA CHECKING FOR GIN GANGA WATERSHED**

B-1-Single mass curve & Double mass curve analysis for Gin Ganga

B-2-Visual checking of rainfall and stream flow for Gin Ganga

B-3-Monthly comparison of Thiessen Averaged Rainfall, Stream flow and Evaporation for Gin Ganga (1980-2011)

B-4- Monthly, Annual and Seasonal Runoff Coefficients for Thawalama Watershed (1980-2005)

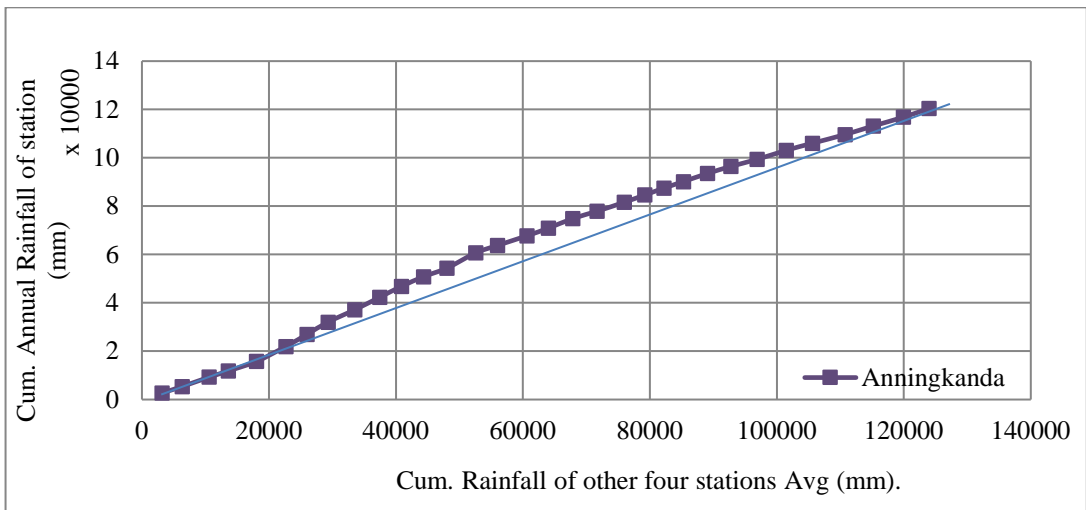
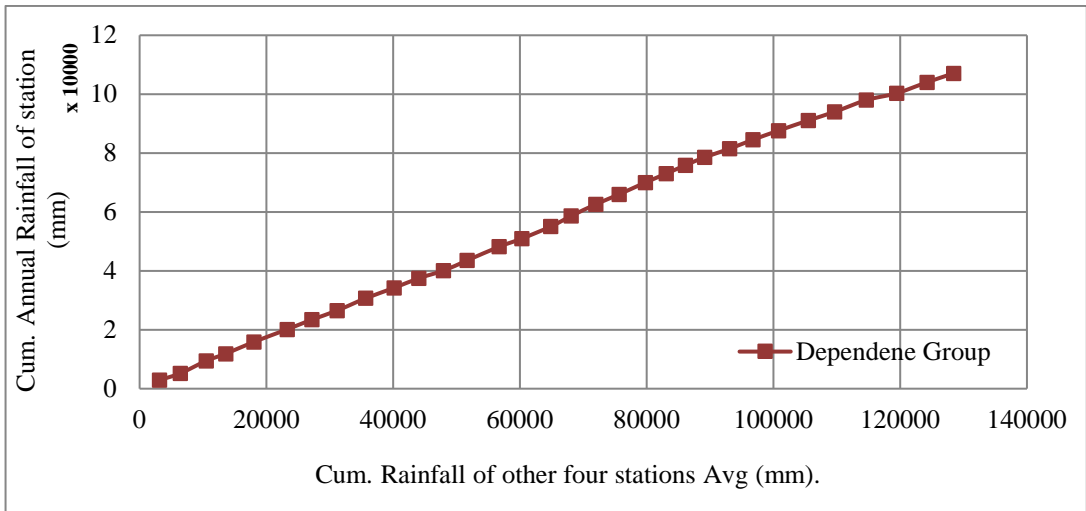
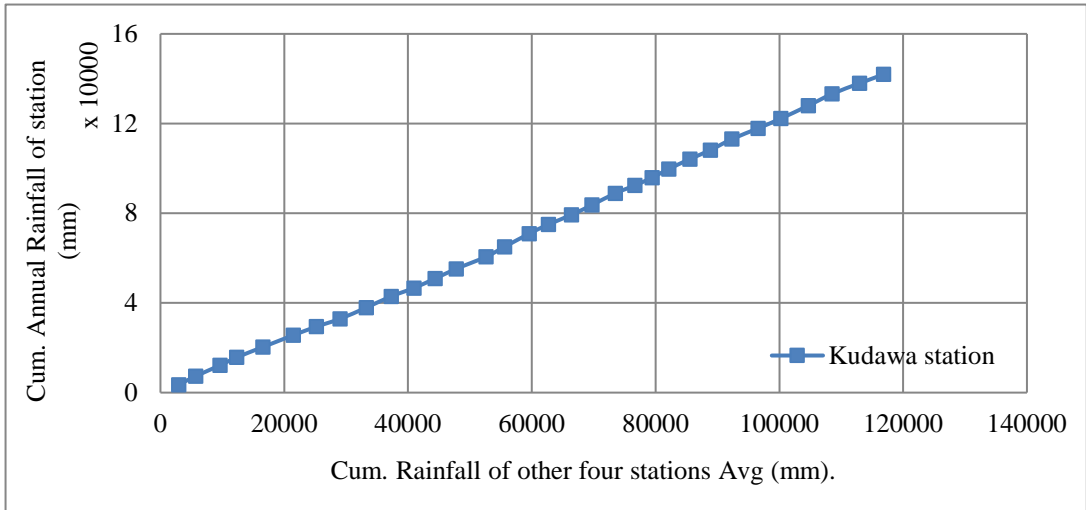


Figure B-1.1: Double mass curve analysis for Gin Ganga



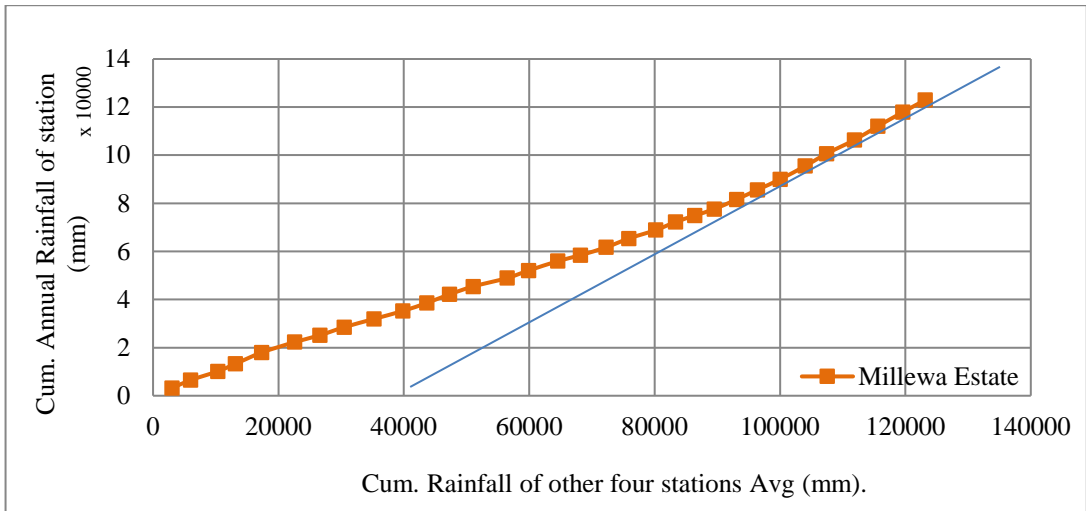


Figure B-1.2: Double mass curve analysis for Gin Ganga

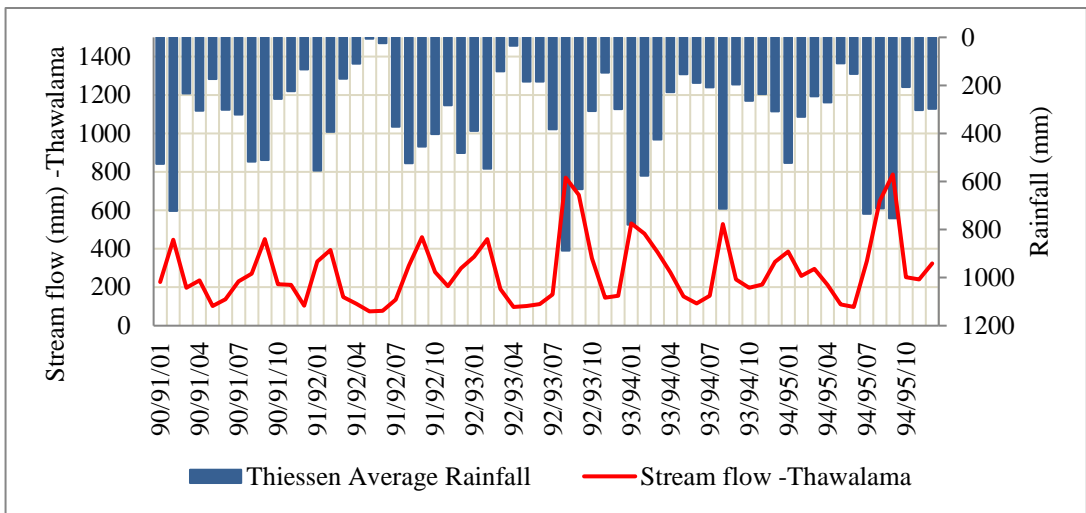
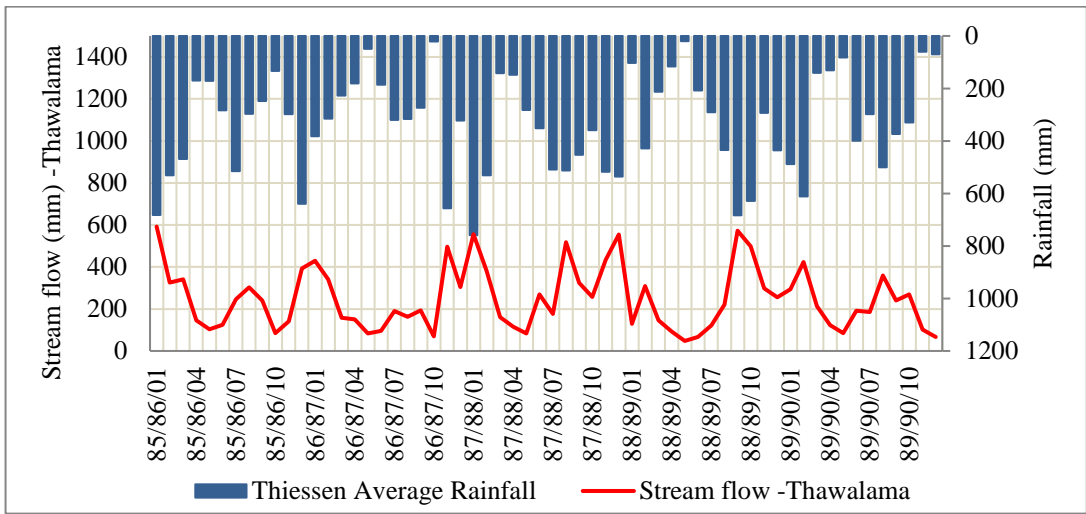
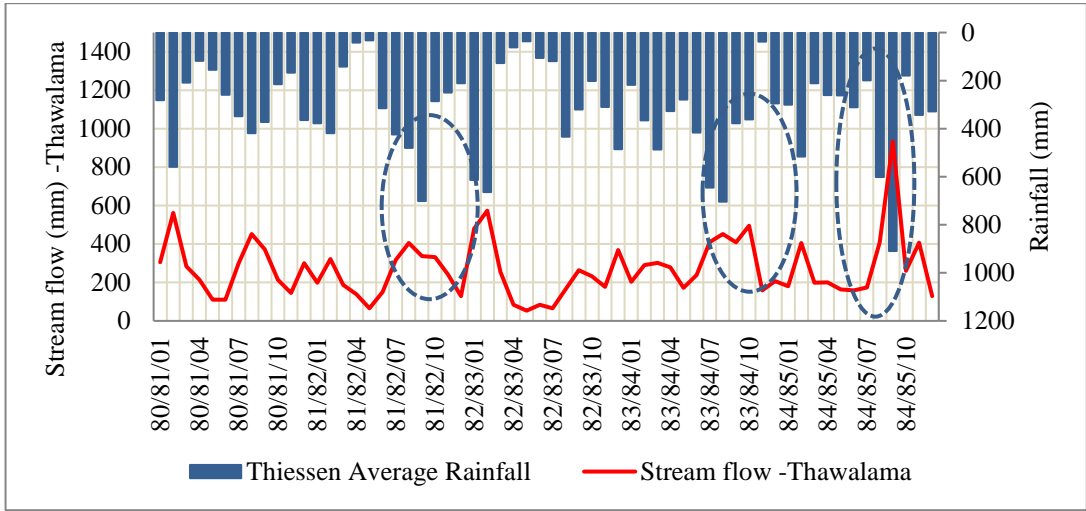


Figure B-2.1: Monthly Stream flow at Thawalama with respect to monthly Thiessen averaged rainfall- 1980-1995

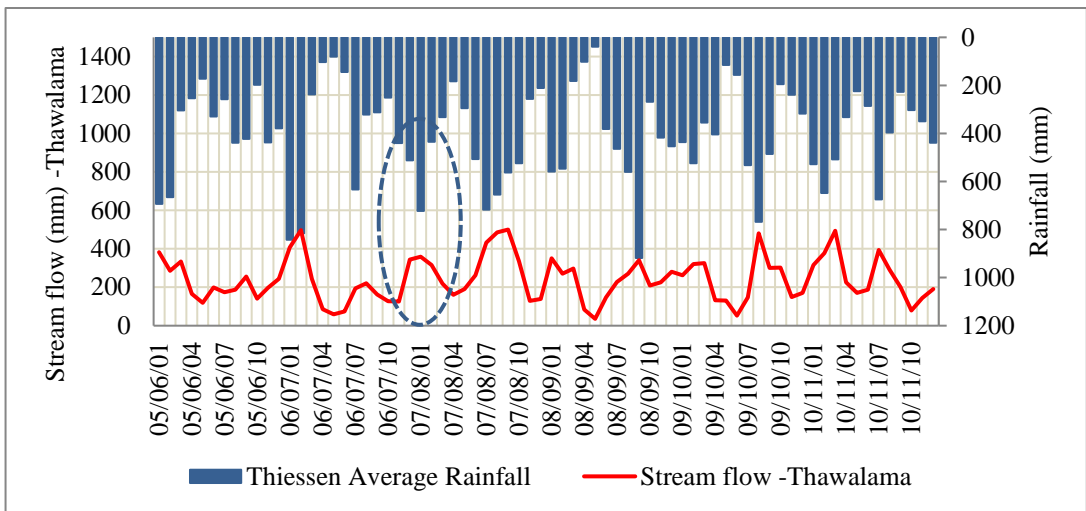
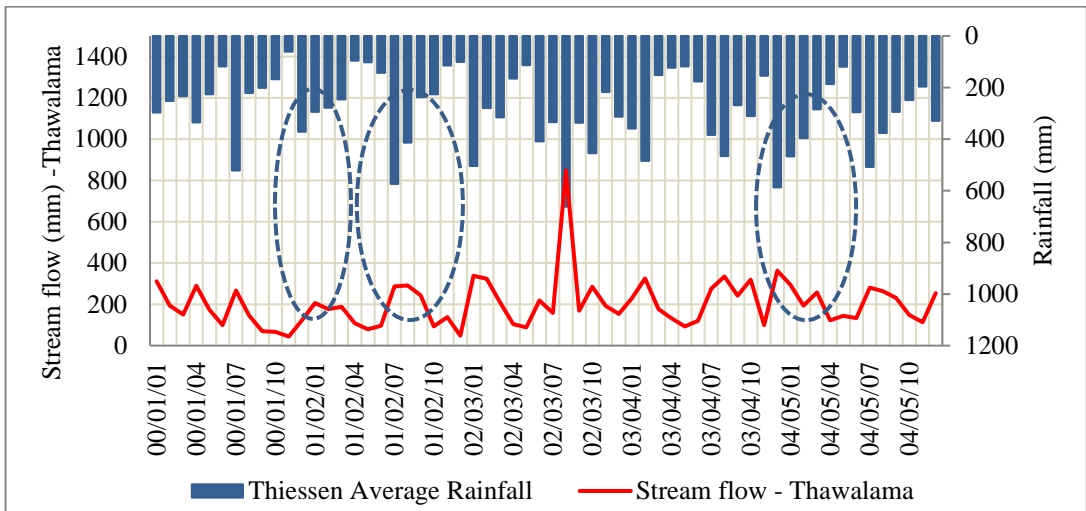
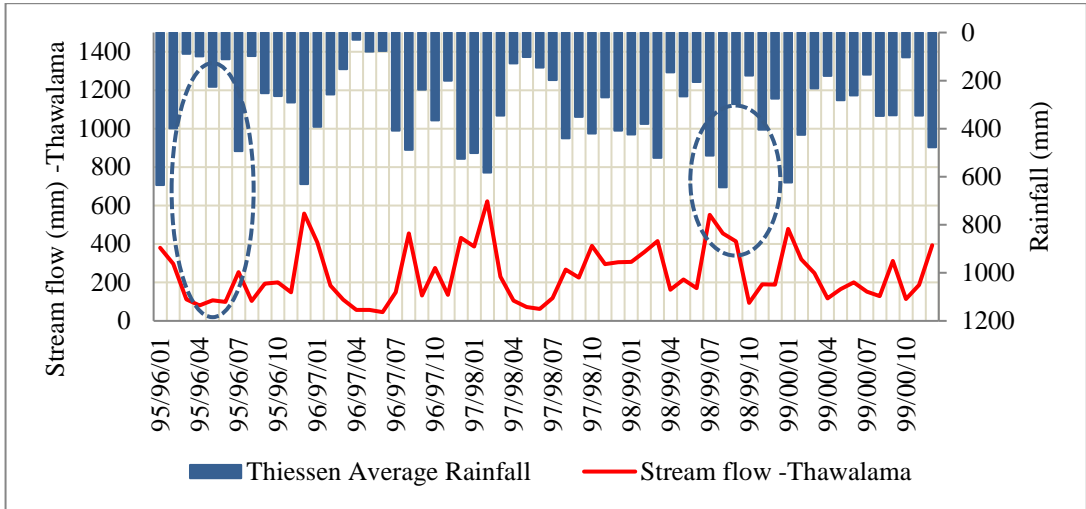


Figure B-2.2: Monthly Stream flow at Thawalama with respect to monthly Thiessen averaged rainfall- 1995-2011

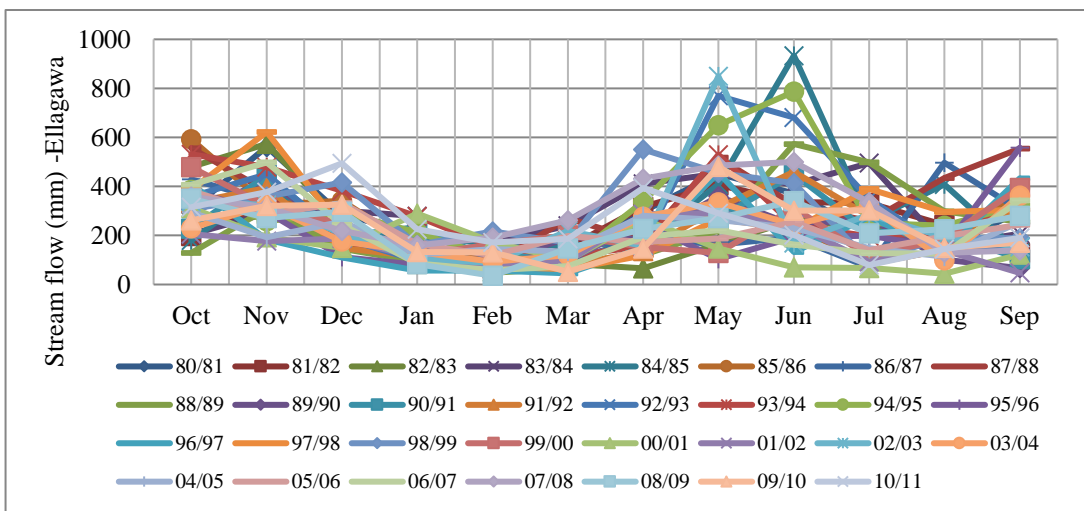
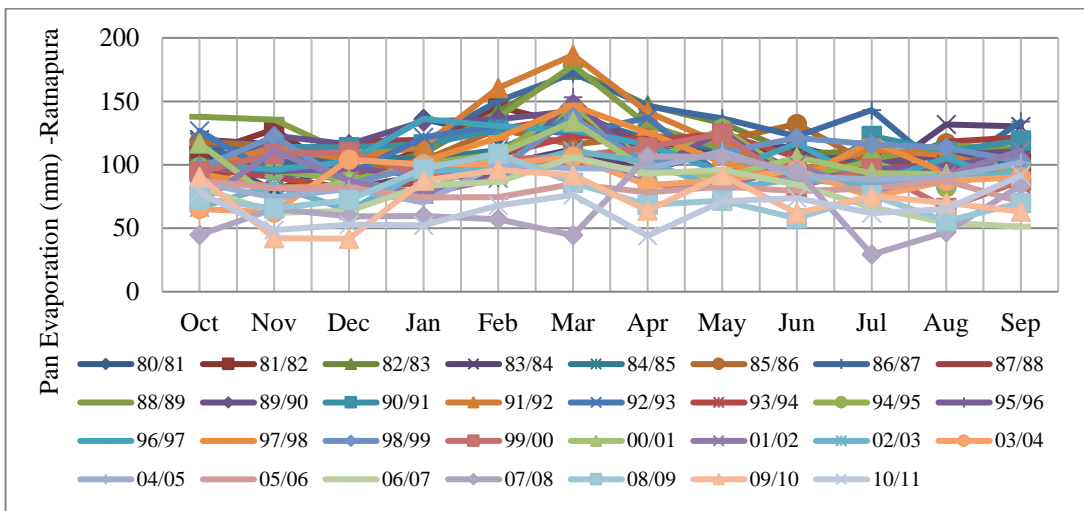
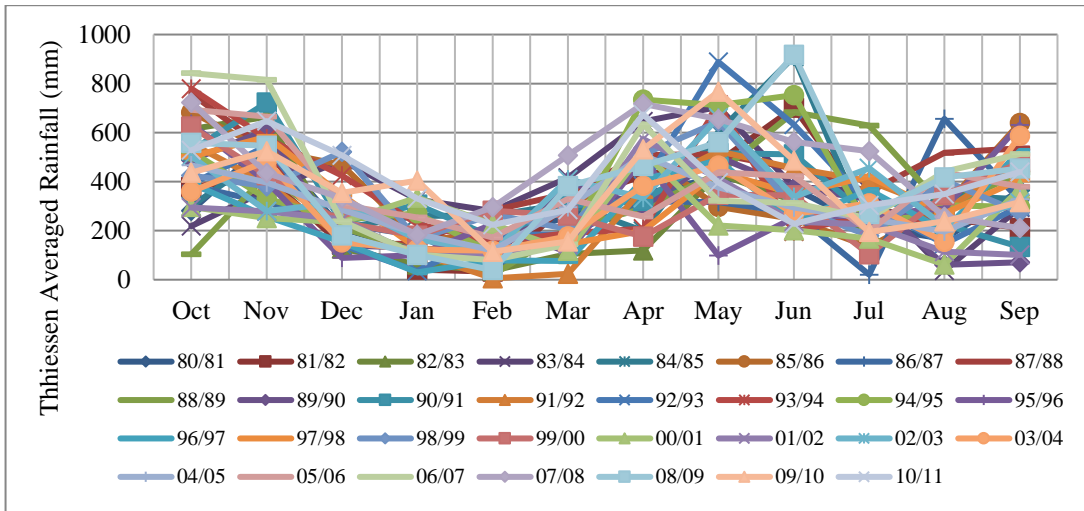


Figure B-3: Monthly comparison of Rainfall, Stream flow and Evaporation for Gin Ganga- 1980-2011

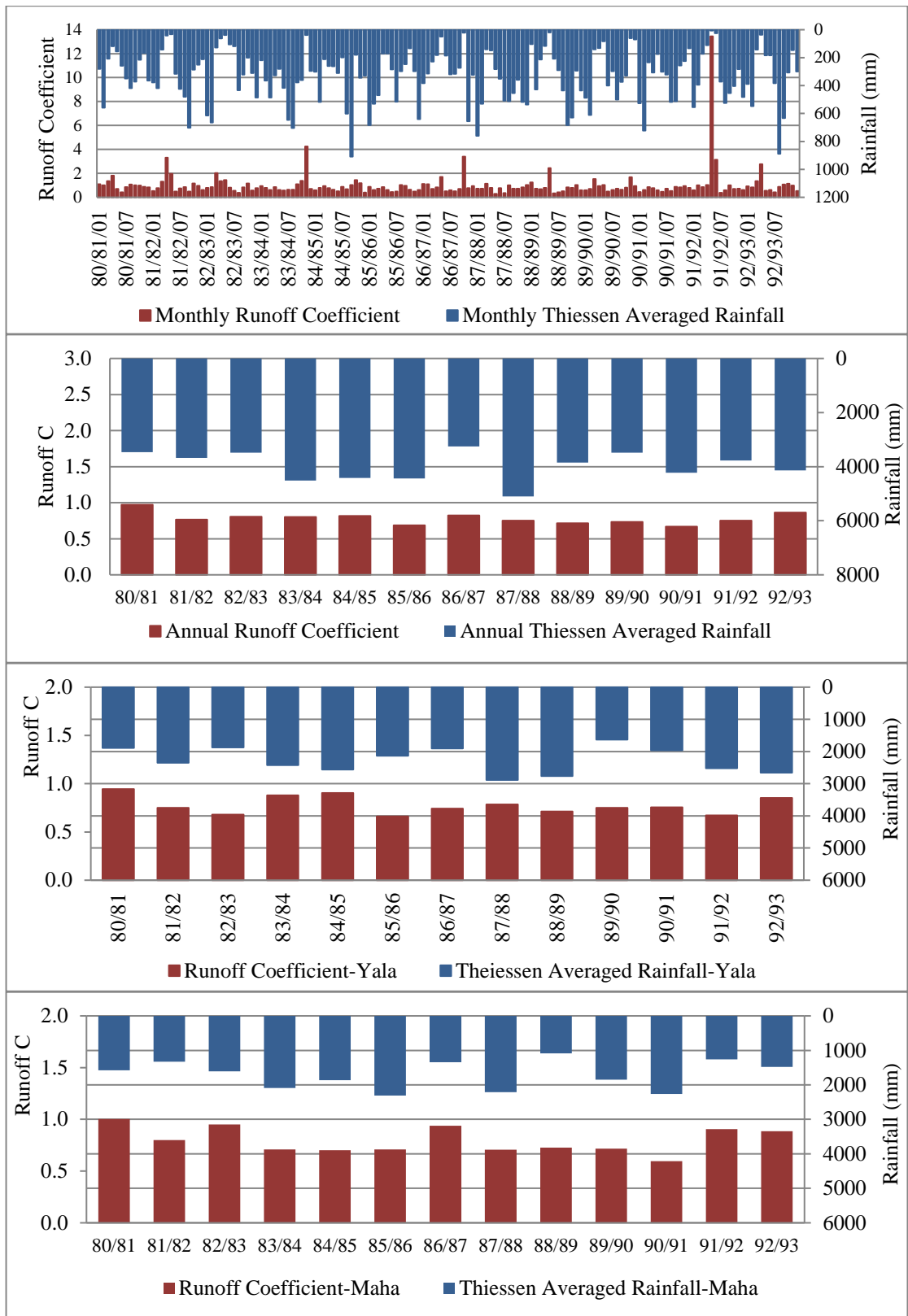


Figure B-4.1: Monthly, Annual and Seasonal Runoff Coefficients for Thawalama Watershed (1980-1992)

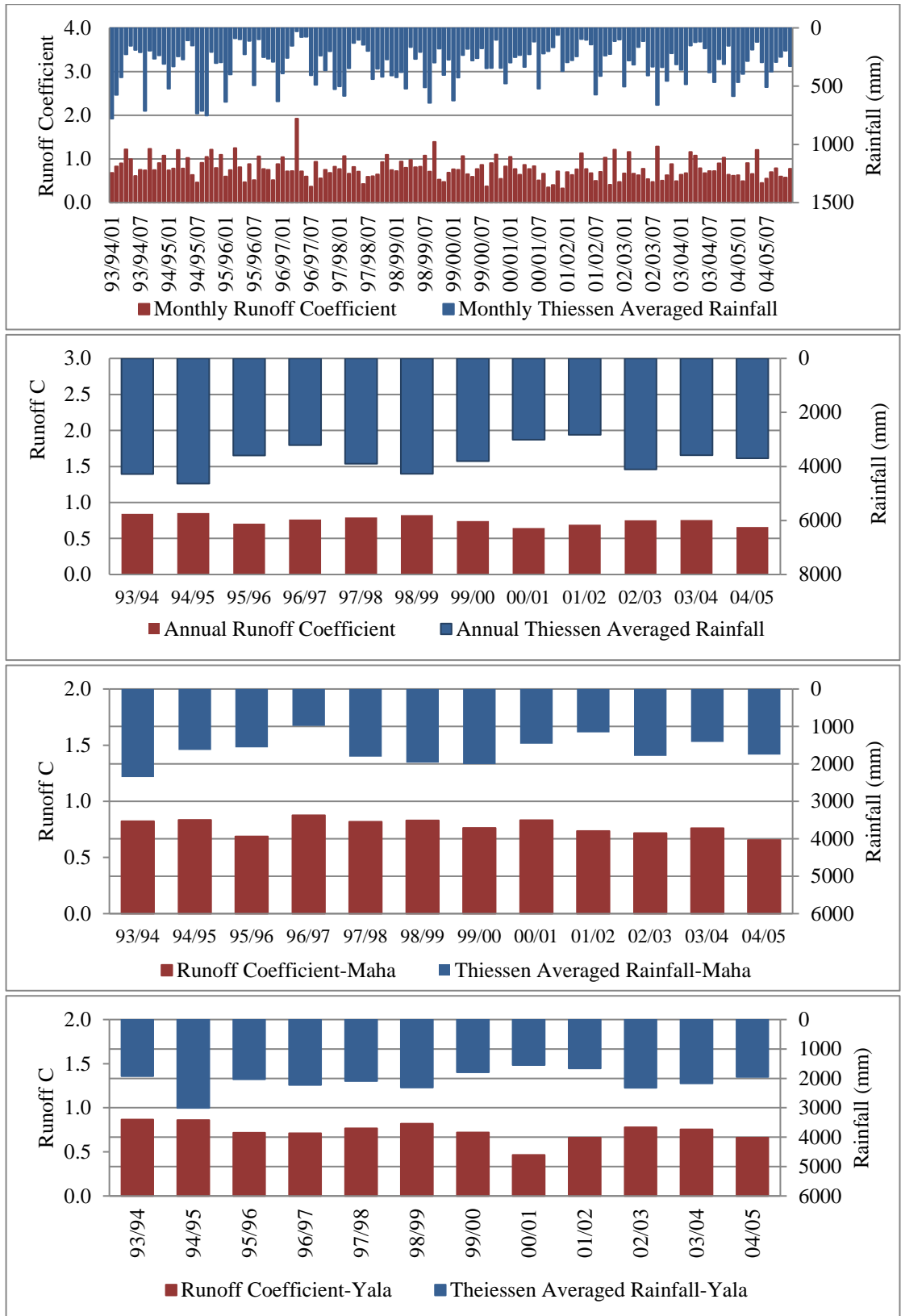


Figure B-4.2: Monthly, Annual and Seasonal Runoff Coefficients for Thawalama Watershed (1992-2005)

