

References

- [1] Ceylon Electricity Board, "Sales and Generation Data Book 2007", Ceylon Electricity Board, 2007
- [2] Ceylon Electricity Board,"Statistical Digest 2010", Ceylon Electricity Board, 2010
- [3] Center for Development of Advanced Computing,India(CDAC) .(undated).[Online] . Viewed. 14 January 2012.Available: <http://www.cdactvm.in>
- [4] Chao Shun Chen,Chai Hung Lin,Hui Jen Chuange and Chai Wen Hung, "Optimal Placement of Line Switches for distribution Automatio System using immune algorithm", IEEE Transactions on Power Systems,Vol.21,August 2008
- [5] National Business Initiative.(Undated).[Online].Viewed 14 January 2012.Available:<http://www.nbi.org.za>.
- [6] Waseem I,Pipattanasompron M and Rahmans S, " Reliability benefits of distribution generation as a backup source", IEEE Power and Energy Society General Meeting, July 2009
- [7] Nexant SARI/ Energy, "Economic Impact of Poor Power Quality on industry: Review of Studies, Sri Lanka", Nexant SARI/Energy, November 2003
- [8] M.R. Hagnifarm, H.Falaghi, M.Ramzani and G.Shanrgari," Enhancement in distribution systems using optimal allocation of Switching devices" ,CIRED 17th International Conference on Electricity Distribution,May 2003
- [9] Taigo Alencar,Anselmo Rodrigues and Maria da Guia da Silva, " Switches allocation in distribution network using particle swarm optimization based on fuzzy expert systems", 17th Power System Computation Conference, Sweden, August 2011
- [10] Department of Energy, Republic of South Africa, "Cost of Unserved Energy- 2010 Input parameter information sheet", Department of Energy, Republic of South Africa,2010
- [11] Ceylon Electricity Board, "Generation Plan-2010", Ceylon Electricity Board, 2010

- [12] Ceylon Electricity Board, “Price List of Materials-2011”, Ceylon Electricity Board, 2011

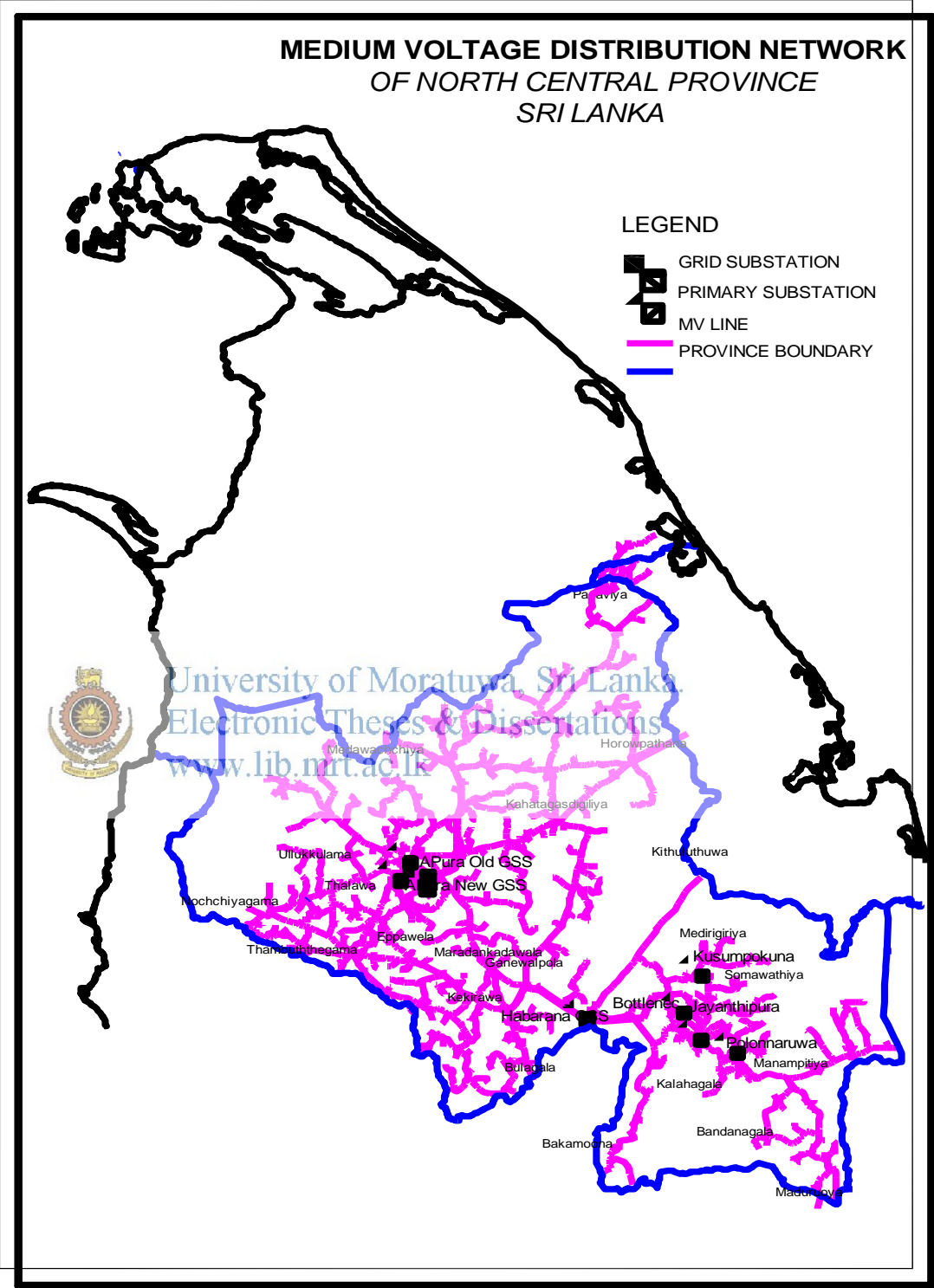


University of Moratuwa, Sri Lanka.
Electronic Theses & Dissertations
www.lib.mrt.ac.lk

Appendices



University of Moratuwa, Sri Lanka.
Electronic Theses & Dissertations
www.lib.mrt.ac.lk



Appendix 1-Geographical boundaries and 33kV network of NCP

Length of Exposure zones (km)

Feerder	Coconut Plantation	General Vegetation	Paddy Field	Thick Jungle	Semi Urban Area	Urban Area	Total Length of the feeder(km)
ANewF4-Thambuththegama	24.8	12.4	24.7	37.1	24.7	0	123.7
ANewF5-Thambuththegama	27.5	27.5	68.8	0	13.8	0	137.6
AOld-Horrowpathana	25.8	51.7	51.9	77.5	51.7	0	258.6
AOld-Medawachchiya	44.0	132.1	44.0	44.0	132.1	44.0	440.2
AOld-Nochchiyagama	139.2	0	0	83.5	0	55.9	278.6
AOld-Old Vavunia	10.7	21.4	32.1	0	21.4	21.4	107.0
AOld-Periyakulama	15.0	0	15.0	29.9	15.0	0	74.9
AOld-Talawa	6.5	6.5	6.5	25.8	19.4	0	64.7
Habarana-F5	22.8	45.6	91.2	22.8	45.6	0	228.0
Habarana-F7	26.9	0	107.5	80.6	53.8	0	268.8
HaF01-Welikanda	33.2	0	66.4	0	16.6	49.8	166.0
HaF02-Jpura	20.8	0	31.2	0	0	52.0	104.0
HaF03-Trinco	42.4	0	63.6	42.4	63.6	0	212.0
HaF04-Manampitiya	172.0	0	0	114.6	0	0	286.6
New Apura F6	0	2.7	0	0	0	24.6	27.3
New Apura F7	0	7.3	14.6	0	14.6	36.4	72.9

Appendix 2-Length of each exposure zones of feeders

Number of failures of NCP feeders-2009

	Jan	Feb	Mar	Apr	May	June	July	Aug	Sep	Oct	Nov	Dec
F4 - Thambuttegama 1	4	3	3	3	6	5	2	3	4	2	3	4
F5 - Thambuttegama 2	5	2	6	2	4	3	2	5	4	5	2	4
F3 - Horowpathana	4	6	5	6	11	2	8	7	7	13	10	8
F7 - Medawachchiya	5	6	6	4	1	3	2	3	2	7	1	3
F1 - Nochhiyagama	5	8	4	4	5	6	0	0	8	9	10	7
F8 - Old Vavuniya	2	2	0	5	2	6	2	1	1	2	2	1
F6- Periyakulama	3	0	0	5	1	2	2	5	3	4	5	5
F2 - Talawa	4	1	0	1	1	1	1	1	3	2	2	2
F5 - Kekirawa I	5	8	8	9	5	9	6	8	6	4	6	8
F7 - Kekirawa II	6	10	12	9	9	9	10	5	17	9	7	8
F1 - Welikanda	9	12	10	8	7	8	6	6	0	1	1	0
F2- Jayanthipura Back Bone	3	3	1	1	2	0	2	2	2	2	2	2
F3 - Trincomalee	12	10	10	8	8	8	2	6	8	1	1	0
F4 - Jayanthipura Back Bone	10	8	10	7	9	10	9	0	0	0	1	4
F6 - Pubudupura	0	2	0	0	0	1	0	0	0	0	1	0
F7 - Anuradhapura 33	0	1	1	2	0	2	1	0	0	0	1	0

Appendix 3-Number of failures of feeders per month for 2009

Number of failures of NCP feeders-2010

	Jan	Feb	Mar	Apr	May	June	July	Aug	Sep	Oct	Nov	Dec
F4 - Thambuttegama 1	6	2	4	3	8	1	1	6	2	5	1	1
F5 - Thambuttegama 2	2	4	4	3	4	3	4	5	4	5	4	2
F3 - Horowpathana	3	8	8	7	9	8	7	11	8	8	7	8
F7 - Medawachchiya	6	4	16	12	3	13	12	3	2	16	1	13
F1 - Nochhiyagama	1	2	2	3	1	9	0	9	1	0	4	8
F8 - Old Vavuniya	8	6	4	4	8	8	2	0	0	0	2	2
F6- Periyakulama	0	0	0	2	1	3	4	3	1	2	0	0
F2 - Talawa	5	9	2	1	1	1	1	1	3	2	2	2
F5 - Kekirawa I	8	7	3	12	2	4	10	2	2	2	14	13
F7 - Kekirawa II	6	8	8	8	6	9	8	5	7	9	7	8
F1 - Welikanda	5	5	0	0	0	0	6	6	0	1	1	0
F2- Jayanthipura Back Bone	3	4	3	2	3	2	2	2	2	2	2	2
F3 - Trincomalee	10	8	1	7	9	2	8	2	13	4	4	0
F4 - Jayanthipura Back Bone	8	0	6	8	1	8	1	0	0	0	1	4
F6 - Pubudupura	3	1	1	1	1	1	1	0	0	0	1	1
F7 - Anuradhapura 33	5	4	8	10	8	3	1	0	0	0	1	0

Appendix 4-Number of failures of feeders for 2010

Power Failures HT

Year - 2011 - Month - March

Area	No of breakdowns																Duration of BDs (min)	
	Way leaves	Branches coming from distance	Burnt jumpers & conductors	Loose span and entanglement	Cracked insulator, L/A and t/f bushings	Due to animal and birds	Non availability of LT protection	ACB Trippings fuses blown	U.G. Cable faults	Sabotage	Accidents due to vehicles	Due to broken poles	Transformer failures	Burnt tail wires and cables	Aging of fuses	Bad weather		Others
Kuliyapitiya	0	13	2	0	1	2	0	33	0	0	0	0	0	0	10	7	0	332
Kurunegala	1	14	0	0	0	1	0	7	0	0	0	0	0	0	0	3	0	28.2
Wennappuwa	0	2	2	1	0	0	0	1	0	0	0	0	0	0	0	0	0	6.46
Chilaw	0	0	1	0	0	0	0	21	0	0	0	1	0	0	5	0	1	67.9
Wariyapola	0	4	22	0	40	0	0	0	0	0	0	0	0	0	6	3	0	56.16
NWP	1	33	27	1	41	3	0	62	0	0	0	1	0	0	21	13	1	490.7
Anuradhapura	5	5	3	0	0	3	0	27	0	0	0	0	0	0	79	5	37	246
Kekirawa	0	0	0	0	0	0	0	26	0	0	0	1	0	0	10	0	0	194
Minneriya	17	7	12	7	0	0	0	49	0	0	0	1	0	0	0	0	0	270
NCP	22	12	15	7	0	3	0	102	0	0	0	2	0	0	89	5	37	710.0
Jaffna	0	1	1	0	0	2	0	4	0	0	0	0	0	0	0	0	1	11
Kilinochchi	12	8	2	5	3	8	0	8	6	2	2	2	0	0	0	2	12	77
NP	12	9	3	5	3	10	0	12	6	6	2	2	2	0	0	0	2	88.0
Col City								3	7				1					
Total - Region 1	35	54	45	13	44	16	0	179	13	6	2	5	3	0	110	18	40	1,288.7

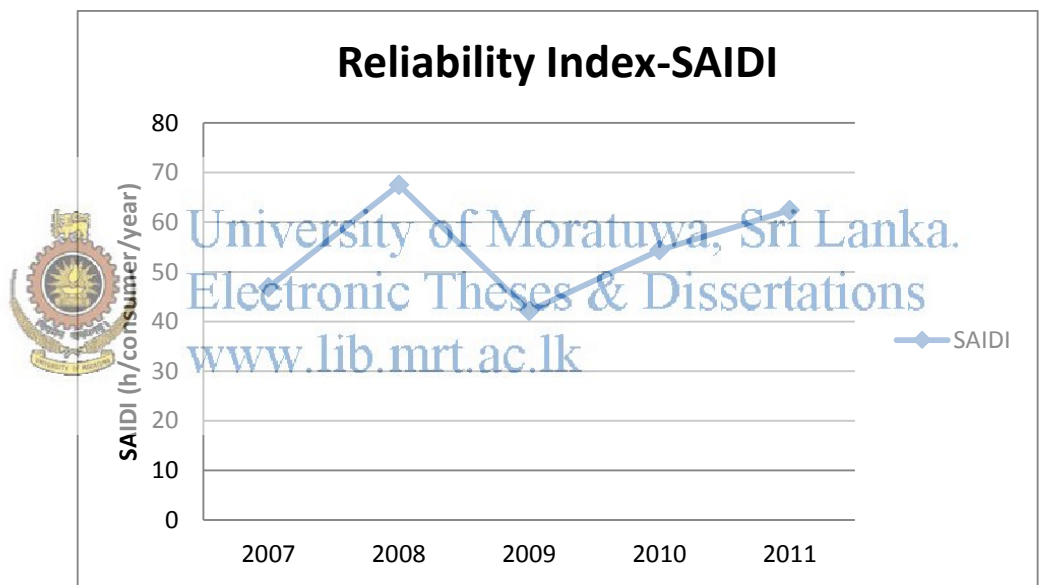
Appendix 5-33kV break down data for March,2011

Power Failures HT-R1

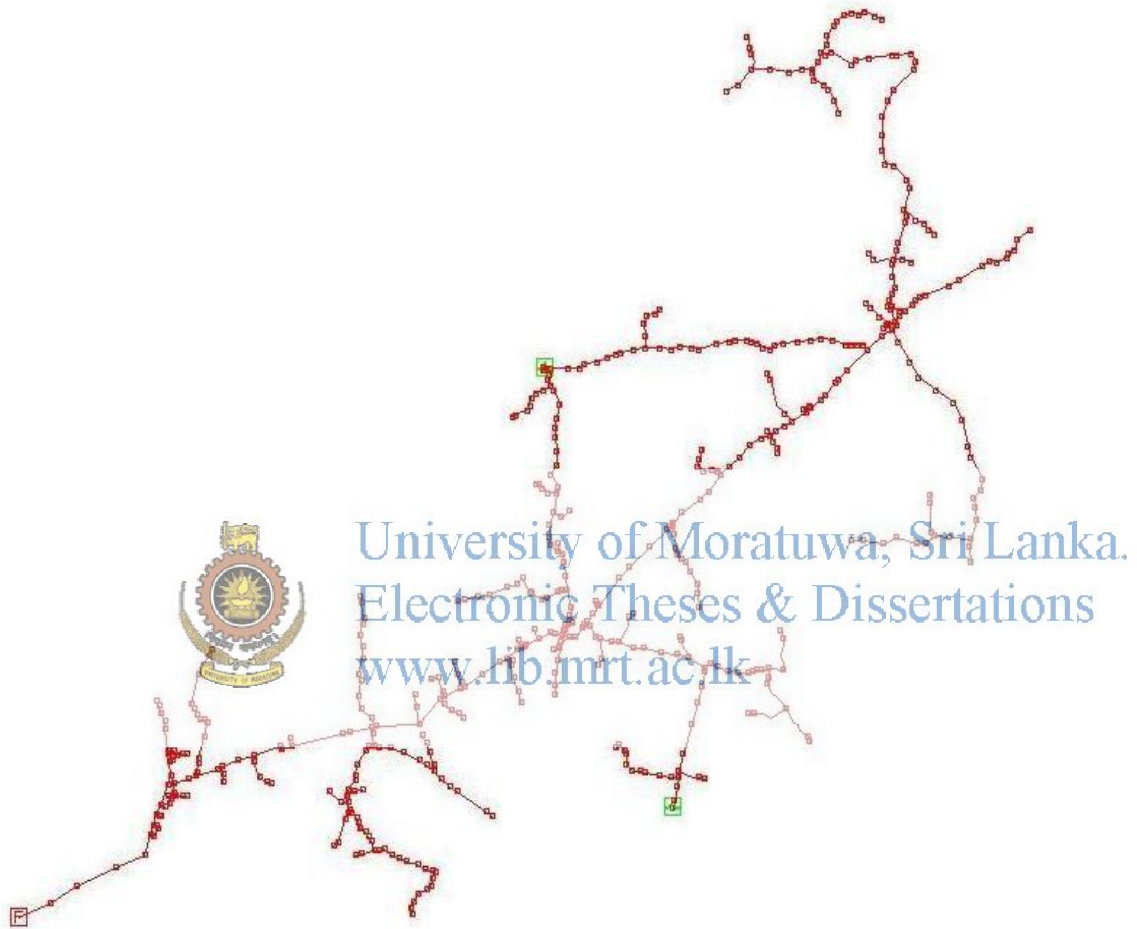
Area	No of breakdowns																	Duration of BDs (hrs)
	Way leaves	Branches coming from distance	Burnt jumpers & conductors	Loose span and entanglement	Cracked insulator	Due to animal and birds	Non availability of LT protection	ACB Trippings fuses blown	U.G. Cable faults	Sabotage	Accidents due to vehicles	Due to broken poles	Transformer failures	Burnt tail wires and cables	Aging of fuses	Bad weather	Others	
Kuliyapitiya	0	17	11	0	0	2	0	34	0	0	0	0	0	0	5	20	89	326.11
Kurunegala	5	1	1	0	0	0	0	6	0	0	0	3	0	0	0	12	1	84.29
Wennappuwa	0	2	0	0	0	0	0	0	0	0	0	0	0	0	0	2	0	2.65
Chilaw	0	0	4	0	0	0	0	24	0	0	0	0	0	0	0	0	0	72.30
Wariyapola	0	1	1	1	0	1	0	15	0	0	0	0	0	0	0	30	0	100.10
NWP	5	21	17	1	0	3	0	79	0	0	0	3	0	0	5	64	90	585.45
Anuradhapura	3	6	4	0	0	6	0	35	0	0	0	0	0	0	35	19	46	405.00
Kekirawa	0	0	1	0	0	0	0	38	0	0	0	0	0	0	41	0	0	226.00
Minneriya	10	8	13	0	0	7	0	75	0	0	1	1	1	0	0	0	0	256.70
NCP	13	14	15	0	0	13	0	148	0	0	1	1	1	0	76	19	46	887.70
Jaffna	0	4	0	0	1	1	0	5	0	0	1	0	0	0	0	1	6	63.00
Kilinochchi	15	8	5	2	6	1	0	20	0	0	0	0	1	0	0	10	20	101.83
NP	15	12	5	2	7	2	0	25	0	0	0	1	0	1	0	0	11	164.83
Col City								3	5				0					
Total	33	47	37	3	7	18	0	255	5	0	1	5	1	1	81	83	147	1637.98

Appendix 6-33kV break down data for April,2011

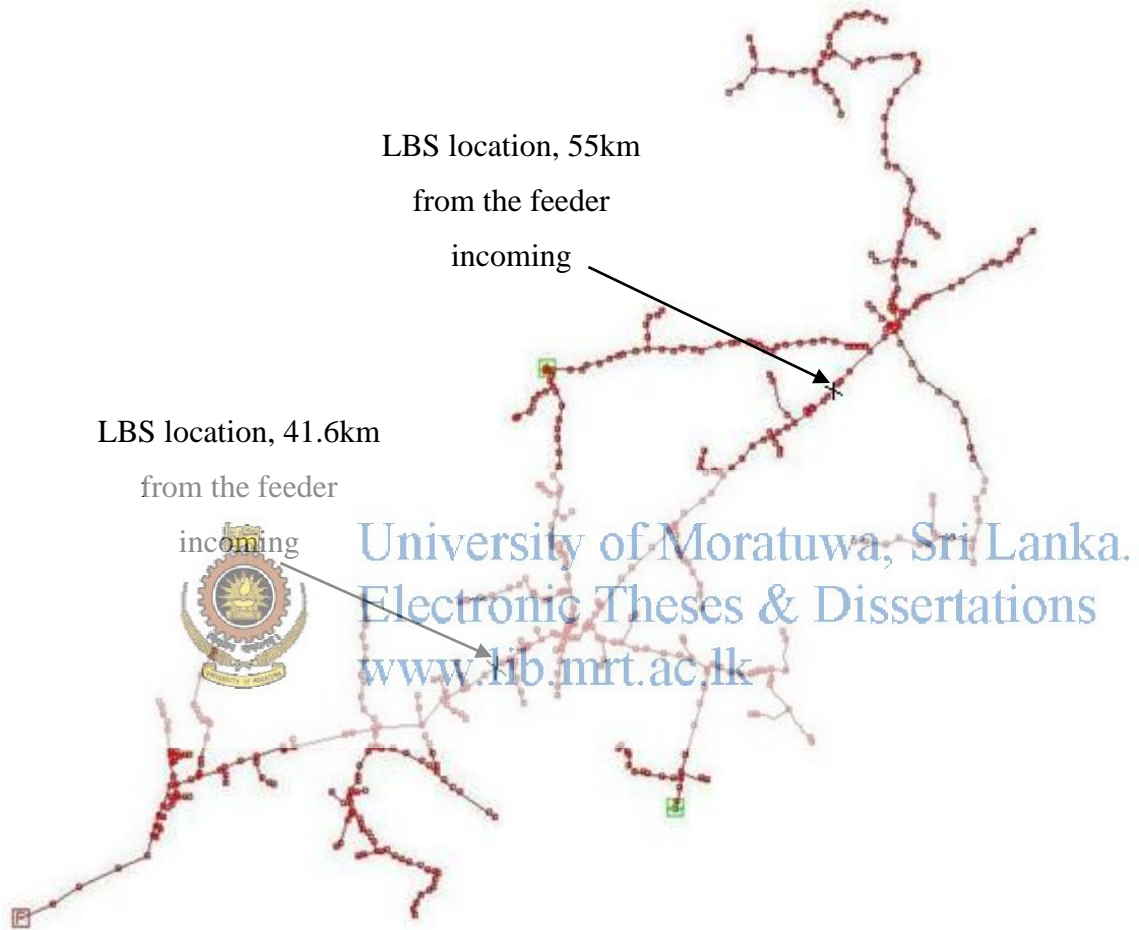
Area	SAIDI (h/consumer/year)				
	2007	2008	2009	2010	2011
Anuradhapura	36.94	71.5	55.38	67.77	49.1
Kekirawa	36.7	38.4	27.2	46.18	21.36
Minneriya	68.28	88.73	39.26	45.26	36.87
NCP	46.88	67.52	42.1	54.33	62.43



Appendix 7-Observed SAIDI of 33kV network of NC



Appendix 8-Horowpathana feeder



Appendix 9-Location of the switches



University of Moratuwa, Sri Lanka.
Electronic Theses & Dissertations
www.lib.mrt.ac.lk